

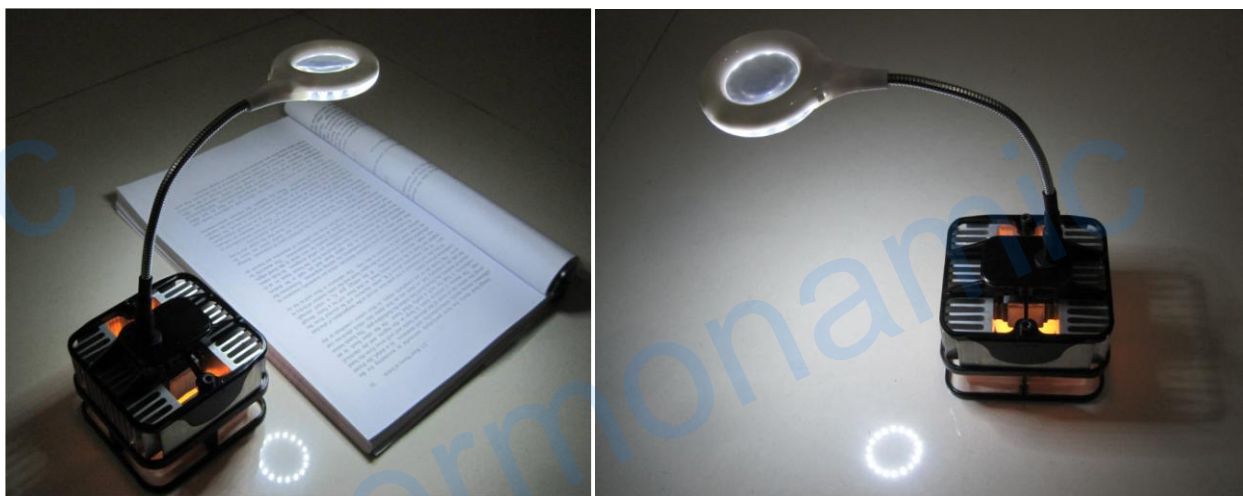
Tealight-Lamp, A LED Lamp Powered by a Tea Candle, Not Electricity, and Not Battery

Description

The new Tealight-Lamp is a LED Lamp powered by a tea candle, not electricity and not battery not pollution. The secret behind is that the LED lamp come with a built-in miniature electricity generator! Thanks to the thermoelectric technology, Thermonamic`s engineer team designs and builds up a mini size generator in the world, which can convert the heat of a burning tea candle directly into the electricity. The Tealight-Lamp provides you the lighting that is brighter than 24 tea candles can offer in same time, brightly enough for comfortable reading. The unique mini and light power-on-demand thermoelectric generator lights up our Tealight-Lamp almost 4 hours per a tea candle, well suited for the off-grid camper, backpacker, hunter, or fisherman, and for those whose work takes them into not electricity areas. In situations where power is lost at home, the Tealight-Lamp is a must-have item for home emergency preparedness, an alternative to battery powered lighting, not charging not pollution.



Structure of the Tealight-Lamp



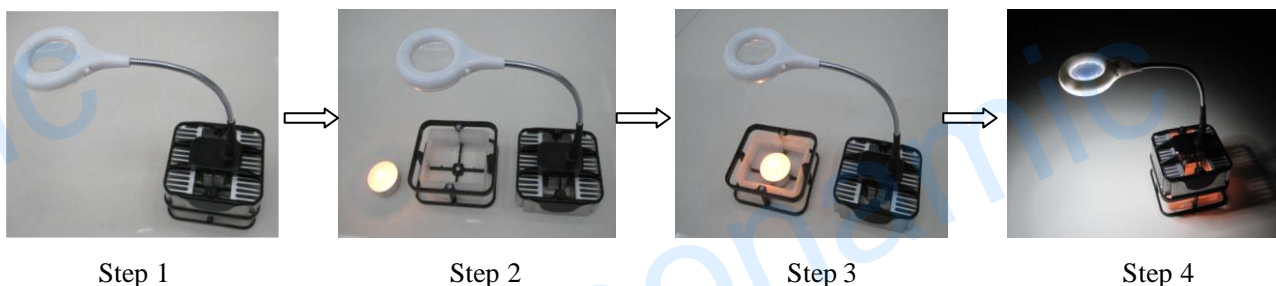
The Tealight-Lamp in Using

Specifications:

Part Number		TeaL-002
Output Power		0.6-1.2 W, depending the flame size and ambience temperature
Dimension / mm	Main part	90 × 83 × 83
	Wax	Φ =38 ~ 40
Weight / g		300 (with LED Lamp)

Instructions in use:

1. Place the Tealight-Lamp on a table or flat surface.
2. Move away the top (the one with heat sink) from the tray as shown in below Step 2.
3. Straighten the tea candle wick, Place the candle in the tray center.
4. Light up the candle and put back the top back to the tray where the magnet will lock it.
6. Plug the LED lamp on socket and on the switch of the lamp. The Lamp need 1-2 minutes to light up after burning the candle as the generator waiting for heated up..



Notes:

1. Do not operate in the place where open flames prohibited
2. Keep the Tealight-Lamp away from flammables.
3. Not allow fabrics, clothing, or any flammable material closed to the Tealight-Lamp.
4. Place the Tealight-Lamp on a flat surface.
5. Keep it out of the reach of children.

Packing list:

- | | |
|------------------|---------|
| 1. Tealight-Lamp | one set |
| 2. Tea Candle | 3 pcs |